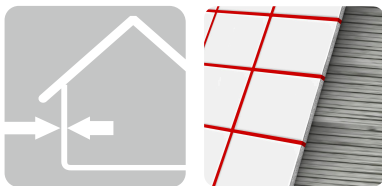
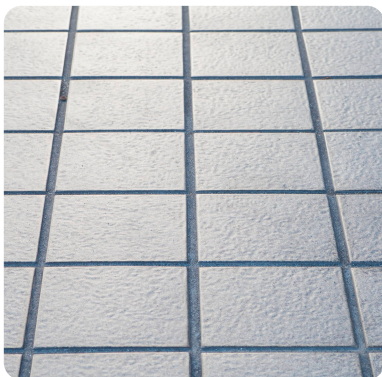


# Pevalit F

Grout (2-8MM)



## APPLICATION

- Flexible material used for grouting tiles from ceramics, porcelain, granite, marble, stone, mosaic-glass, etc.
- For surfaces of living spaces, baths, corridors, terraces, balconies, facades, work spaces, public baths, on flooring with a heating system, etc.
- Indoor and Outdoor environments.
- For use on walls and flooring.
- Universal material, resistant against frost and abrasion, doesn't allow the penetration of moisture and pollution.
- Recommendation that the width of the grout not exceed 8mm.
- Characterized by good application, easy washing and good penetration capabilities.
- Material should be used only after PEVALIT tile adhesive has been dried, as to not affect the color of the grout.
- Certified in CG 2 – class, by norm EN 13888.

Tile Dimensions	Grout Dimensions	Consumption per m <sup>2</sup>	Surface Covered with 2kg PEVALIT - F
5x5x0.6 cm	2 mm	approx. 0.8 kg / m <sup>2</sup>	approx. 2.6 m <sup>2</sup>
10x10x0.8 cm	2 mm	approx. 0.33 kg/ m <sup>2</sup>	approx. 6.0 m <sup>2</sup>
15x15x0.8 cm	3 mm	approx. 0.33 kg/ m <sup>2</sup>	approx. 6.0 m <sup>2</sup>
20x25x0.8 cm	3 mm 5 mm	approx. 0.25 kg/ m <sup>2</sup> approx. 0.4 kg/ m <sup>2</sup>	approx. 8 m <sup>2</sup> approx. 5 m <sup>2</sup>
30x30x1 cm	5 mm	approx. 0.3 kg/ m <sup>2</sup>	approx. 7 m <sup>2</sup>
40x40x1 cm	2 mm 5 mm	approx. 0.14 kg/ m <sup>2</sup> approx. 0.18 kg/ m <sup>2</sup>	approx. 15 m <sup>2</sup> approx. 11 m <sup>2</sup>

- Working time in container:** Up to 4 hours after mixing.
- Working time:** Up to 20 minutes.
- Work temperatures:** +5°C - +30°C.
- Resistant to temperatures:** -20°C - +80°C.
- Norm:** SG2, based on EN 13888.
- Walking on tiles:** After 8 hours.
- Mixing with water:** approximately 4 min., with around 0.55 l/2kg
- Packaging:** 2 and 5 kg.
- Material color:** According to catalogue.
- Best before:** In the original packaging 12 months, in a warehouse without moisture.