



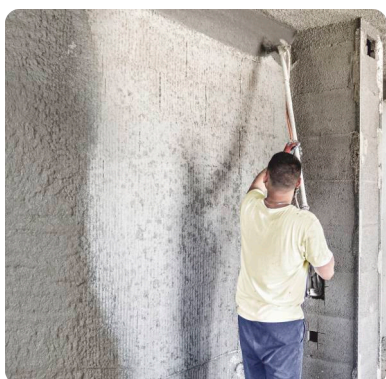
Pevalit

G3

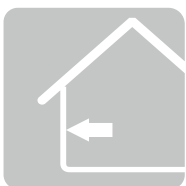
Lime Plaster

APPLICATION

- Plaster based on concrete and lime.
- For plastering walls and ceilings, in indoor environments.
- Adaptable for all base layers, such as baked bricks, clay bricks, limestone or concrete blocks, etc.
- Sprayed by hand or by machine.
- Before use in places of smooth and gasbeton concrete, binding liquid or PEVALIT-G2 needs to be used.



Layer Thickness	Consumption	Surface Covered with 25kg PEVALIT - G3
10 mm	approx. 17 kg/m ²	approx. 1.5 kg/m ²
15 mm	approx. 25 kg/m ²	approx. 1 kg/m ²
20 mm	approx. 32 kg/m ²	approx. 0.8 kg/m ²



- Sanding: From 0-1.5 mm.
- Layer thickness: between 0.8 and 4 cm.
- Dry mass density: 1850 kg/1m³
- Steam permeability coefficient: ca.23.
- Norm: MKC EN 998-1/Kop: 2006.
- Pressure durability (after 28 days): CS I, ca. 2.7 N/mm².
- Purpose and Water absorption: GP, W0.
- Temperature conductivity: 0,75 W/mK.
- Reaction to fire: A1.
- Work temperatures: +5°C - +30°C.
- Mixing with water: with approximately 7.5 l/25kg.
- Material color: Grey.
- Packaging: 25 kg.
- Best before: In the original packaging 12 months, in a warehouse without moisture.

